

## Case Study

**Service:** 3D Scanning

**Location:** King William Street & Anchor Wharf Bay

**Client:** Erith

Swantest was contracted by Erith to complete a 3D scan of a vault beneath the road of King William Street.

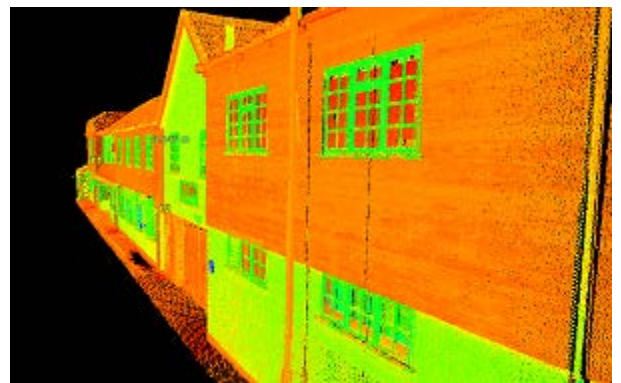
The job is a demolition project, with limited information, especially of the voids under the road. A gantry is to be installed on the pavement for the next phase, but due to the voids this will need to be propped. Having a 3D scan will give us an understanding of the voids so we can design/draw the props.

The Leica 3D scanner allows us to produce a three dimensional drawing of any desired structural element. Giving us a more accurate, complete as-builts for retrofit design projects. This means reduced facility down time and less construction rework due to interferences and fit-up problems and the ability to factory-fabricate instead of field-fabricate

### Key to images:

1. A cleaned 3D scan of Anchor Wharf building using the Leica P40 Scanner
2. This is a completed drawing from our CAD department showing the gantry sitting on the road, above the vault.

1



2

